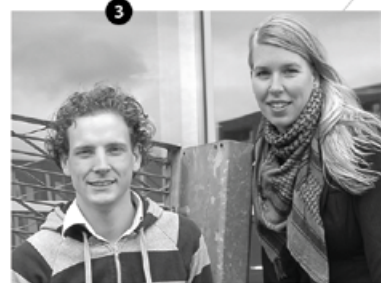


Dynamic Duo

ONTWERP DUO > Design studio Eindhoven

A DREAMER AND A MATHEMATICIAN, IT SEEMS THIS YOUNG AND GIFTED DUTCH DESIGN DUO COMPLEMENT EACH OTHER WELL. THE WILD FANTASY IS CREATED, AND IS THEN SURREPTITIOUSLY GROUNDED BY THE MATHLETE; IT'S A PHILOSOPHY THAT SEEMS TO KEEP THINGS FROM GOING A BIT OVER ECCENTRIC, AND TENDS TO GENERATE AN ALLURING, YET GRASPABLE CHARM.



1| The Cupboard, a new life for old zinc boxes.

2| Openbook, leave your book on the correct page.

3| Designers Nathan Wierink and Tineke Beunders.

4| What it is, it isn't; an installation toying with dreamlike, light refraction.

5| Time To Fly; one flew over the cuckoo's nest – and became a clock.

WORDS: DAVE VICKERS IMAGES: COURTESY OF ONTWERP DUO

Designers Nathan Wierink and Tineke Beunders just can't wait to get their imaginative paws immersed into the ever-compliant Dutch design marketplace. Already graduated, Tineke nurtured the fledgling design studio. Nathan has recently graduated cum laude from the Design Academy Eindhoven. The pair make-up a formidable force, effortlessly flanking the ideas of more experienced Dutch design academics. Business acumen aside, they admit they just can't delay the fun any longer. Tineke's wistful approach blends perfectly with Nathan's mathematical line of attack, forging a mind challenging ambience that uses simplicity as the key to our affections. The 'What it is, it isn't' installation perfectly illustrates how the two integrate their expertise. The rippled, underwater profile of this odd closet screams out an 'Alice in Wonderland'-style deformation (and we all know the fuel behind that story's fire)! But why just deform when you can restore normality at the same time? Enter the maths; the 'Looking Glass' stand, with its axis at the apex of AA similarity thus bisecting the congruent halves obviously brings back a concentric geometry, thus reinstalling isometric normality to variable optical channels. Or in other words, if you position yourself correctly behind the looking glass, the cupboard appears normal. It's an appealing concept (even to those not attracted to the arts), as are many of the duo's ideas, and the fact that they produce most of their installations from the ground up, including the tricky build process, will probably ensure that this innovative pair continue to compete at a high level on a very spirited design forum. Ideas like the controversial '1-2-3 Birdhouse for free', a lackadaisical idea that employs the poor birds to finish off their own home, will surely keep the duo on the tip of everyone's tongue. ✕