

当 Nathan  
遇到 Tineke

IF I HAD A WORLD OF MY OWN,  
EVERYTHING WOULD BE NONSENSE.  
NOTHING WOULD BE WHAT IT IS,  
BECAUSE EVERYTHING WOULD BE WHAT IT ISN'T.  
AND, CONTRARIWISE, WHAT IT IS, IT WOULDN'T BE.  
AND WHAT IT WOULDN'T BE, IT WOULD.  
YOU SEE?

—LEWIS CARROLL

# When Nathan Meets Tineke



假如我有属于自己的世界，  
一切都将毫无意义。  
没有什么能永恒不变，  
因为只有变化才是永恒的。  
反之亦然，不变的东西将不会永恒。  
而永恒唯有不断的变化。  
您明白其中的玄妙吗？

— Lewis Carroll

文：谷晓书  
摄影：Lisa Klappe

“一个是梦想家，一个是数学家”，Nathan Wierink 和 Tineke Beunders 这对来自荷兰的年轻设计组合可称得上是一对能够相互取长补短的绝佳搭档：Tineke 先是产生出天马行空的狂野幻想，然后 Nathan 以其数学家般的缜密头脑悄悄将这种幻想化为现实。这种感性与理性主义的联姻似乎可以避免设计出过于怪诞的作品，而同时又能让他们的设计创作散发出一种极富诱惑却又恰如其分的魅力。

2008 年，Nathan Wierink 和 Tineke Beunders 以优异成绩毕业于荷兰埃因霍温设计学院，此时他们便已经迫不及待地冲进广阔的设计天地里挥洒自己的想象和才华。其实，早在设计学院学习期间，这对二人组合就已经创办了自己的设计工作室，尽管那时的他们还略显稚嫩。组建一支精干的设计团队的想法让他们将商业才能完全抛在脑后，对此他们承认已无法再抗拒投身实际的设计工作所带来的巨大诱惑了。

Tineke 充满浪漫和理想主义色彩的构思与 Nathan 严谨精确的工作方式构成了绝好的搭配，并且营造出一种考验人们智慧的氛围。在这一氛围中，简约的风格成为打开他们情感的钥匙。“在我们位于埃因霍温的工作室中，我们设法独立完成从构思到制作最终成品的整个步骤，通过这种方式我们得以维持相对较小的生产规模和个性化的生产模式。” Nathan Wierink 说道。

Tineke 擅长从她童年时的记忆中抽取有趣的构思并形成各种设计，而 Nathan 则通过运用物理学原理和产品制作中的工艺技术来形成一种更加实用的设计方法。此外，两个人都将他们极具个性化的风格带到设计工作中，其结果便有了这一种颇为有趣的同时兼具概念性创造与精美工艺的混合设计作品。

1. 储物柜，锌、胶合板，2006  
2-4. “Marbelous”，枫木，2008





"A dreamer and a mathematician", this young Dutch design duo complement each other well. The wild fantasy is created, and is then surreptitiously grounded by the mathlete; it's a philosophy that seems to keep things from going a bit over eccentric, and tends to generate an alluring, yet graspable charm.

Designers Nathan Wierink and Tineke Beunders - both graduated cum laude from the Design Academy in 2008 - just couldn't wait to get their imaginative paws immersed into the design marketplace. While studying, this duo nurtured the fledgling design studio. The pair make-up a

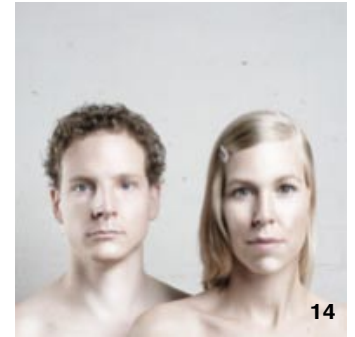


formidable force, and business acumen aside, they admit they just couldn't delay the fun any longer.

Tineke's wistful approach blends perfectly with Nathan's mathematical line of attack, forging a mind challenging ambience that uses simplicity as the key to our affections. "From our studio in Eindhoven, we try to do the whole process ourselves. From the idea to the finished product, in this way, we keep the production small and personal." Nathan Wierink said.

Tineke's strength is to build concepts into the designs by drawing on her memories as a child, whereas Nathan adopts a more hands-on approach by employing physical laws and craft techniques in the construction of the products.

With each half of the duo bringing a very individual style to the design process, the outcomes are an interesting hybrid of conceptually driven and beautifully crafted design.



[www.ontwerpduo.nl](http://www.ontwerpduo.nl)

5-10. "When I was little..." ,  
木材、陶瓷、玻璃、羊毛、金  
属, 2008

11.12.15. "What it is, it isn't",  
木材、锡、聚氨酯, 2008

13. "Joints", 桃花心木, 2008

14. Nathan Wierink 和 Tineke  
Beunders

